



JBMI is a manufacturing company and is a 100% source for Machined Components, Press Parts , Die Casting Components and Assemblies for Automotive Industries, Electrical, Electronics , Textile and Elevator Escalator Industries

Our Vision

We intend to be known for conformance to reliability and quality manufacturing in all industrial sector we deal in.

Our Mission

We shall be known as manufacturer of reliable precision parts and assemblies for diversified industrial segment like auto, textile, power generation and transmission, Agriculture Equipments etc. located any where on the globe. We shall continuously improve our system, procedures and resources towards the zero tolerance for defects. We shall be known as an employee friendly organization where operations are managed by self empowered knowledge workers concentrating every moment on minute details to make the processes mistake proof and capable.

As requirement increased JBMI increased capacity of plant with addition of different machines. Also addition new plants and units at different locations was done & all plants are running successfully in Pimpri, Chinchwad Industrial area & PDC unit in MIDC Ranjangaon.

JBMI UNIT-1

Manufacturing of 100 % Machined components, gears, shafts, transmission parts, gear box assemblies etc, with machines such as Lathe, Milling, centreless grinding, cylindrical grinding, gear cutting, gear shaping and shaving, hobbing, broaching, Drilling, Traub, CNC, VMC setup.



Machinery



CNC Machine



Traub Machines



Gear Hobbing, Shaping and Shaving



Lathe Machines Setup



CNC Machinery



Milling Setup

JBMI UNIT-2 AREA 40000 SQ/FT

A vertical machining center (VMC) is a machining center with its spindle in a vertical orientation. High-end VMCs are high-precision machines often used for tight-tolerance milling, such as fine die and mold work.



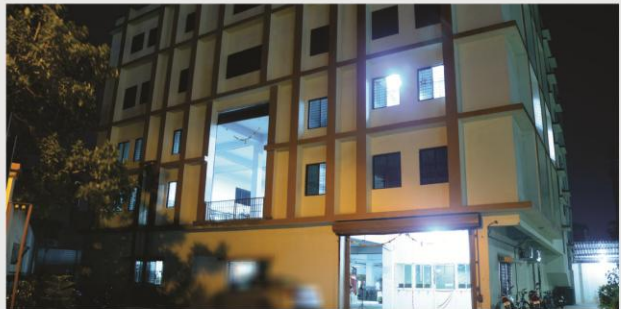
15 Nos VMC Machines Setup



25 Nos MAZAK CNC setup

JBMEPL UNIT-1

JBMEPL (Unit I): Machining facilities such as 15 nos BFW VMC and 20 nos CNC machines.



HMC Machine



VMC setup

JBMEPL UNIT-2 PDC OPERATIONS

JBMEPL (Unit II) : Manufacturing of Pressure Die Casting Components (PDC) with facilities such as HMT machines from 200 Tonnes to 660 Tonnes.



Die casting Machines 200 to 660 Tonnes



Shop Floor 40,000 sq/ft

JBMSPL UNIT- PRESS & STAMPING PARTS

Manufacturing of Press & Stamping parts with facilities of press machines from 60 Tonnes to 800 Tonnes.



JBMSPL



Press Machines

QUALITY INSPECTION LAB / AUTOMOBILE COMPONENT

Quality Inspection Lab

Quality Inspection Lab with Facilities such as Carl zeiss CMM, Profile Projector, Hardness tester, etc.



TRIMOS



SURFACE FINISH TESTER



OPTICAL SPHEROMETER

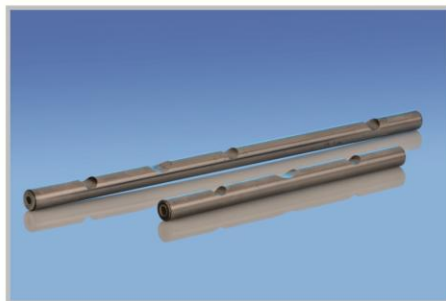


HARDNESS TESTER

Exporting Components



Main Shaft



ROCKER ARM SHAFT



HANDLE BAR TAG

PRODUCT RANGE / AUTOMOBILE COMPONENT

Highly Presiced Components



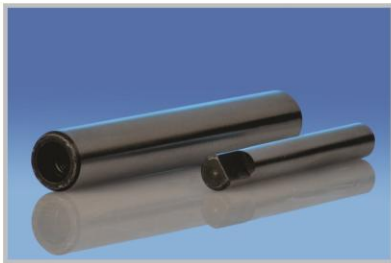
REAR WHEEL AXLE



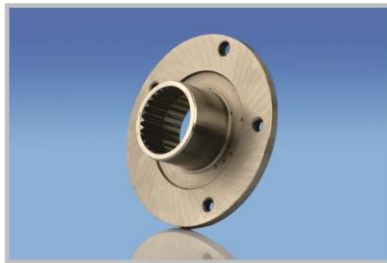
MAIN SHAFT



PIN RC LIVER HINGE



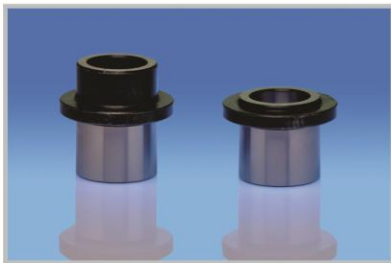
ROCKERARM SHAFT



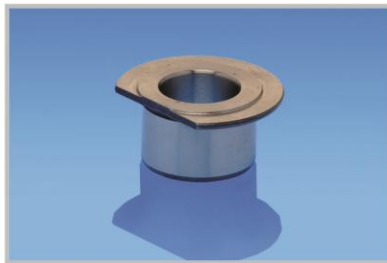
CAM CLUTCH HUB



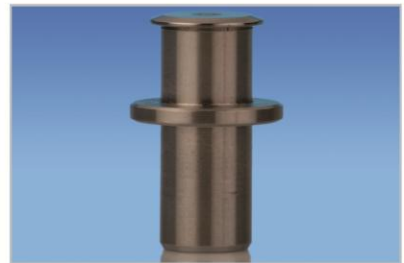
PIN RC GEAR SHIFT



BUSH FIRST GEAR



INNER RING



PIN FOR JAW FULCRUM



SPROCKET PINION



ADAPTER



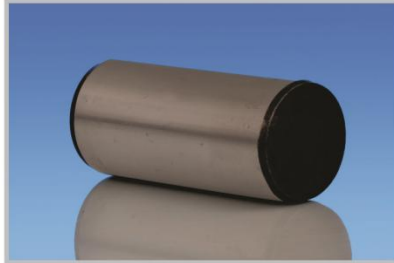
IDLER PIN WITH DOWEL

PRODUCT RANGE / AUTOMOBILE COMPONENT

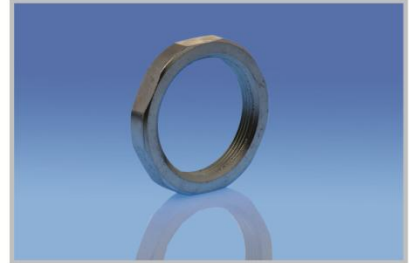
Engine Components



SLIDER



IDLER PIN



RING NUT



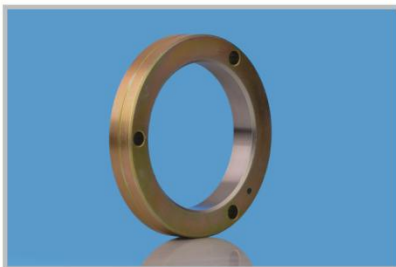
TONNER RING



CAM SHAFT SPROCKET



WASHER



ROLLER GUIDE



NIPPLE



TENSION ROD

Aluminum Products



ENGINE SIDE COVES BS-2



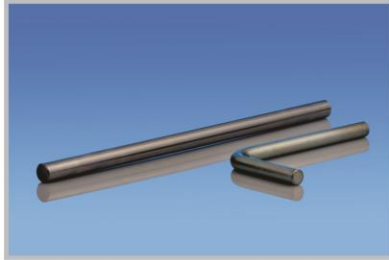
ENGINE SIDE COVES BS-3



MAIN HOUSING

PRODUCT RANGE / ELECTRICAL SWITCH GEAR COMPONENTS

Electrical Switch Gear Components



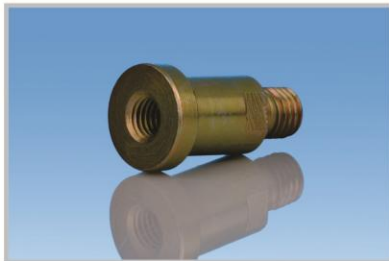
ROD DM



CLAMPING PIECE



SHAFT 350



HOLDING LUG



COUPLER



WINDING SCREW

ASSY Components



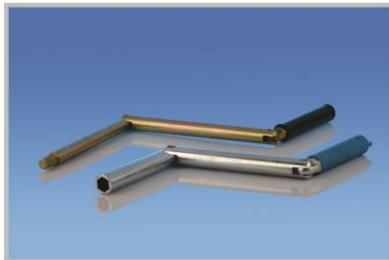
SPRING CAP ASSLY



FRCD ASSEMBLY



GEAR BOX ASSEMBLY



WINDING HANDLE ASSY.



FM HANDLE



EXTRACTOR SCREW ASSLY

PRODUCT RANGE / ELECTRICAL SWITCH GEAR COMPONENTS

Transmission Components



17 N-M GEAR BOX



PULLEYAXLES 1



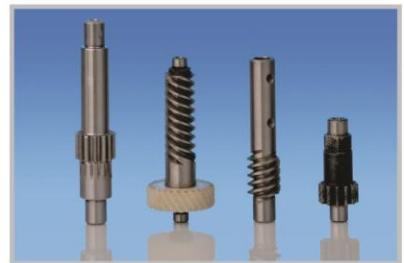
PULLEYAXLES 2



SPUR GEAR



SPUR GEAR (2)

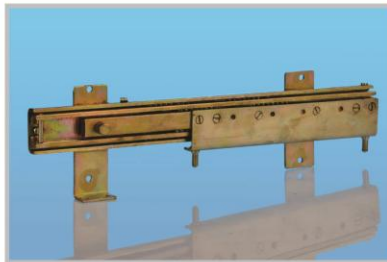


WORM SHAFT

Press Components



PIASTRINA BRACCIO POLAR



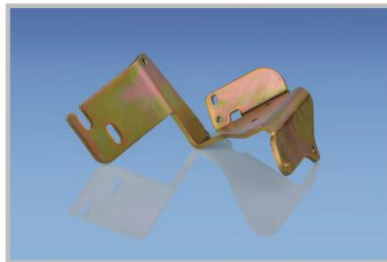
RAIL ASSEMBLY



FORK



WINDING HANDLE ASSY.



SUPPORT



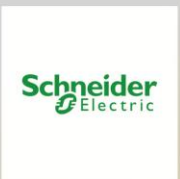
SUPPORT

CLIENTS

AUTOMOBILES



ELECTRICAL SWITCH GEAR



TEXTILE MACHINERY & OTHERS



ISO CERTIFICATION



ISO TS JBMI



ISO JBMI



ISO JBMEPL



ISO TS JBMEPL



JAI BHAWANI MATA GROUP OF COMPANIES

ISO/TS: 16949-2002 CERTIFIED REGISTERED ORGANIZATION

“Where Quality is not an act, it’s a Habit !”

JAI BHAWANI MATA INDUSTRIES

Plant- 1
681/1, LANDEWADI, BHOSARI,
PUNE - 411 039

Plant- 2
T- 150, MIDC - BHOSARI,
PUNE - 411 026

JAI BHAVANI MATA ENGITECH PVT LTD.

Plant- 1
PLOT NO - 40, SECTOR NO. 10
PCNDTA, BHOSARI,
PUNE - 411 026

Plant- 2
PLOT NO -D 240/241, MIDC
RANJANGAON, TAL. SHIRUR,
PUNE - 412 209

JAI BHAWANI MATA STAMPINGS .PVT .LTD

Plant
GAT NO - 185, BARGE VASTI,
CHIMBALE, TAL - KHED,
PUNE

Contact Details:

Tel. : + 91 20 27128026

Fax : + 91 20 27127164

website: www.jbmipune.com

E-mail: info@jbmipune.com